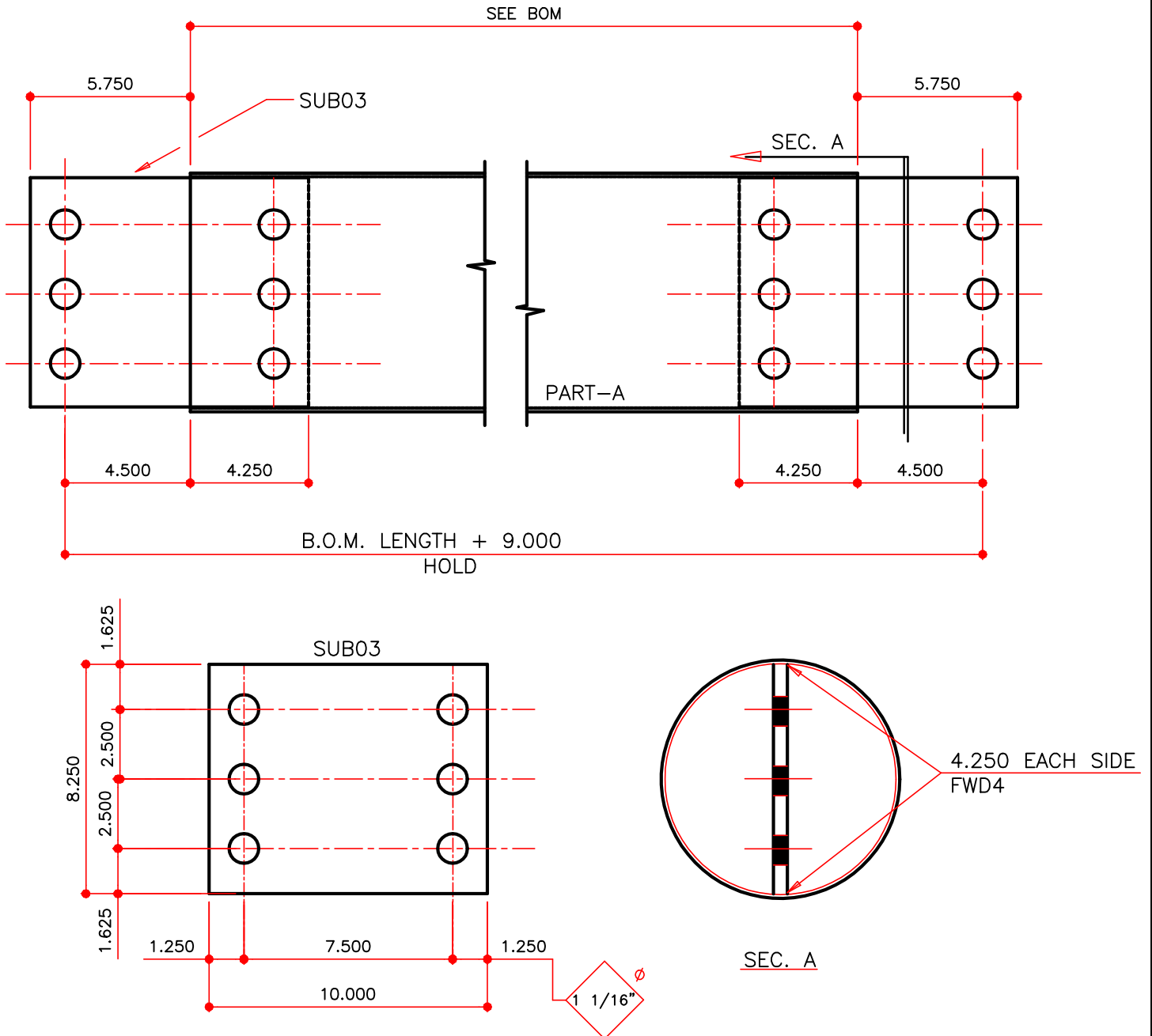


# PIPE STRUT (8" PIPE)

EPS\_\_

MASTER PART NUMBER	VINTAGE	AVAILABLE COLORS	THICKNESS	YIELD	BLANK WIDTH	BLANK LENGTH	TOTAL WEIGHT LBS	LRC
EPS__	B	BK,RP,GP	NA	NA	NA	SEE BOM	SEE BOM	W 07A S 07A T 07A U 07A



SUB-UNIT PART NUMBERS	AVAILABLE COLORS	THICKNESS	YIELD	BLANK WIDTH	BLANK LENGTH	SUB-UNIT PART WEIGHT LBS
PART-A (PIP08)	BK	.188	42 KSI	8.625	SEE BOM	SEE BOM
SUB03	BK	0.500	55 KSI	10.000	8.250	11.69
(6) H0640	1" BOLTS AS LOOSE SUB-UNITS					
(6) H0330	1" NUTS AS LOOSE SUB-UNITS					