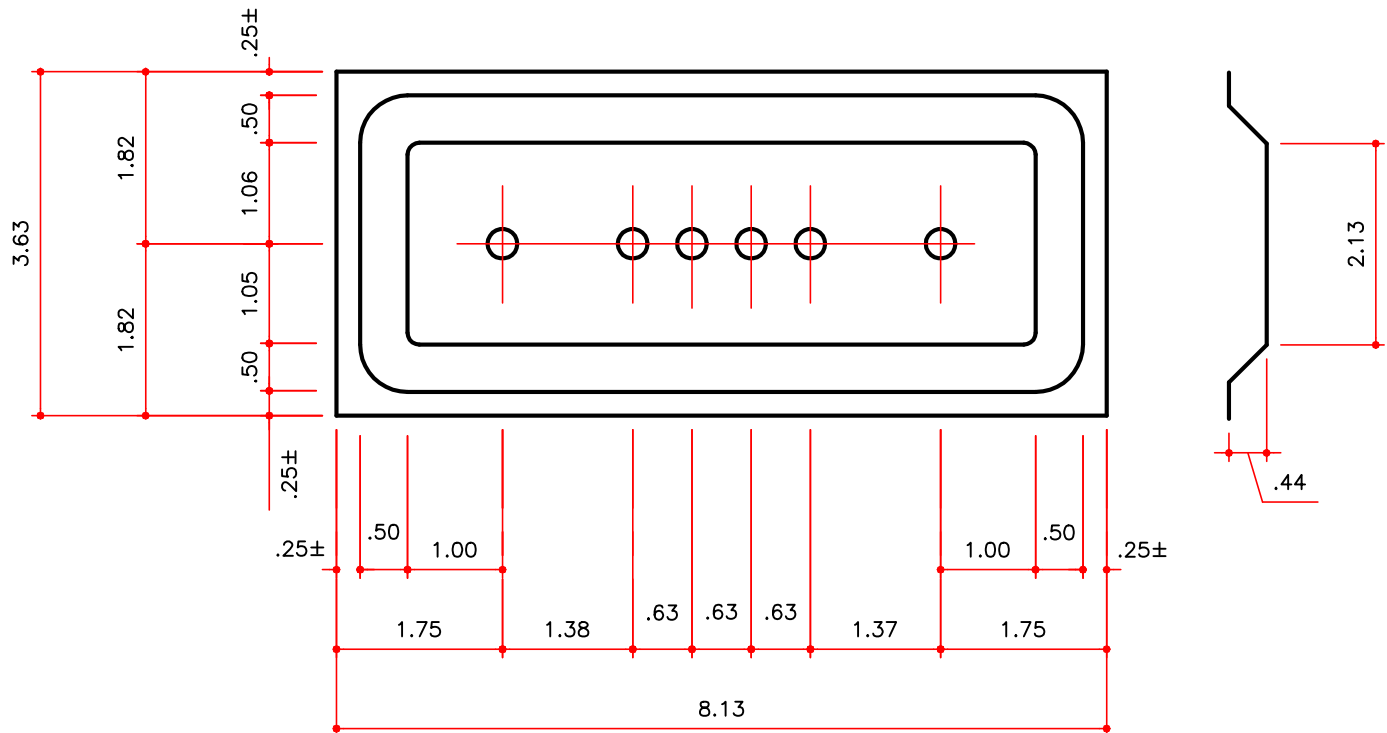


# RECESSED BEARING PLATE

BPA01

MASTER PART NUMBER	VINTAGE	AVAILABLE COLORS	THICKNESS	YIELD	BLANK WIDTH	BLANK LENGTH	TOTAL WEIGHT LBS	LRC
BPA01	D	GZ	18 GA	33 KSI MIN	4.000	8.500	.46	W 05A S 05C T 05D U 13A

HOLE DIAMETER IS 0.313



## DETAILING NOTE:

If Perimeter Clips are required for Composite CFR, the standard BPA01 does not work. Refer to the Roof Sheeting section of the Detailing Manual (subsection 6.4) for instructions.