

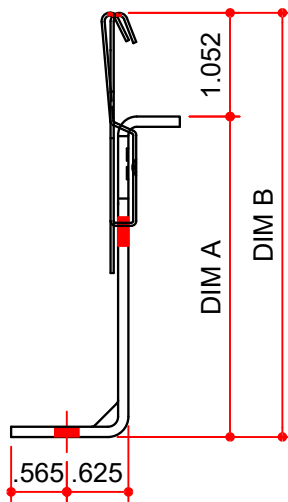
MASTER PART MARK	VIN	AVAILABLE THICKNESS	YIELD MIN.	BLANK LENGTH	BLANK WIDTH	WEIGHT (LBS)
SSPC-1	B	N/A	50 KSI	N/A	N/A	0.46
SSPC-2T	B	N/A	50 KSI	N/A	N/A	0.64

MATERIAL:

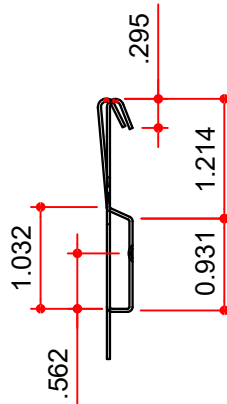
CLIP TAB: SAE HIGH CARBON SPRING STEEL 0.031 ± 0.002 THICK

CLIP BASE: 12 GA (0.104 ± 0.005) GALVANIZED STEEL ASTM A446 GRADE D 50 KSI MIN. FINISH IS PHENOLIC, EPOXY, FLUOROCARBON OR EQUIVALENT. COATING TESTING TO MINIMUM 150 HOURS W/O FAILURE ACCORDING TO SALT SPRAY SPEC ASTM B117.

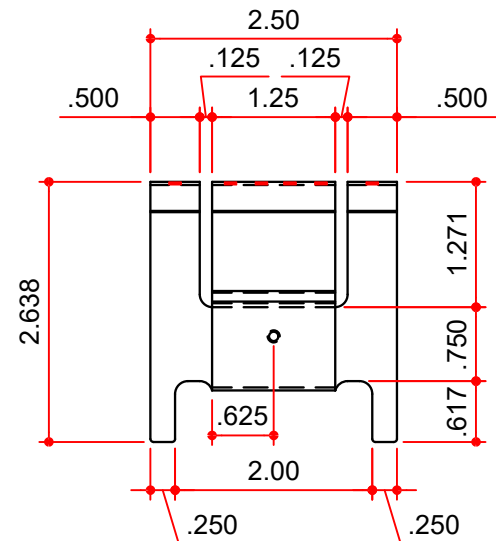
MK #	CLIP TYPE	STAND OFF	DIM "A"	DIM "B"
SSPC-1	SHORT	1/2"	2.25	3.30
SSPC-2T	TALL	1 1/2"	3.625	4.68



ASSEMBLED END VIEW



CLIP TAB END VIEW



CLIP TAB FRONT VIEW

NOTES: BUYOUT

1) CLIP TAB TO BASE ASSEMBLY IS A SLIDING FIT.

AVAILABLE COLORS

NP