

MASTER PART MARK	VIN	AVAILABLE THICKNESS	YIELD MIN.	BLANK LENGTH	BLANK WIDTH	WEIGHT (LBS)
S3PC-1R	B	N/A	50 KSI	N/A	N/A	1.02
S3PC-2TR	B	N/A	50 KSI	N/A	N/A	1.26

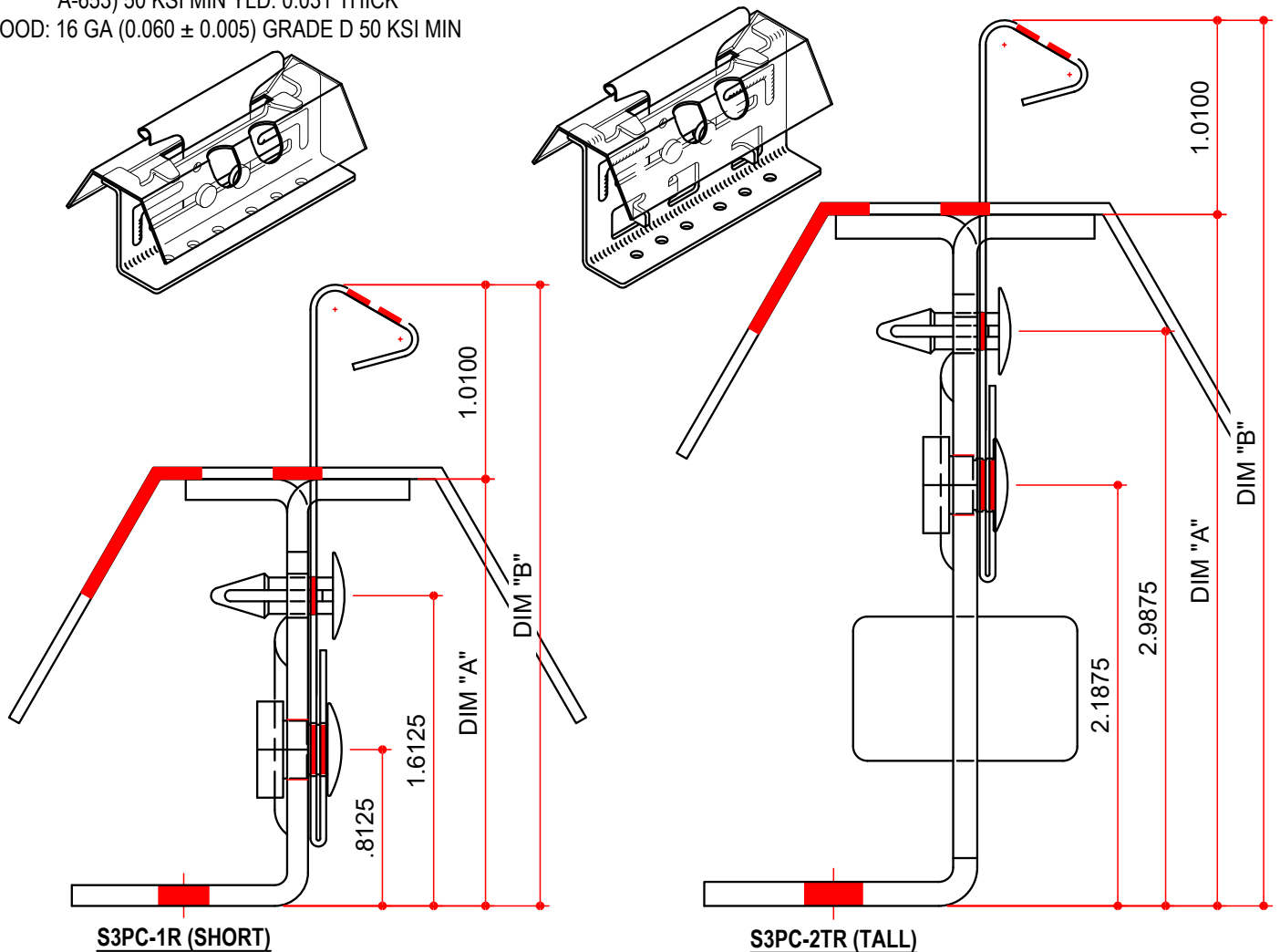
MATERIAL:

CLIP BASE: 12 GA (0.104 ± 0.005) GALVANIZED STEEL
ASTM A446 GRADE D 50 KSI MIN

CLIP TAB: G-90 GALVANIZED STEEL (PER ASTM
A-653) 50 KSI MIN YLD. 0.031 THICK

CLIP HOOD: 16 GA (0.060 ± 0.005) GRADE D 50 KSI MIN

MK #	CLIP TYPE	STAND OFF	BASE	TAB	DIM "A"	DIM "B"
S3PC-1R	SHORT	1/2"	SHORT	S3PC_- TAB	2.1875	3.2285
S3PC-2TR	TALL	1 1/2"	TALL	S3PC_- TAB	3.5625	4.6035



NOTES: BUYOUT

- 1) CLIP TAB TO BASE ASSEMBLY IS A SLIDING FIT.
- 2) REFERENCE THE BASE, TAB & HOOD DRAWINGS FOR ADDITIONAL INFORMATION.

AVAILABLE COLORS

NP