

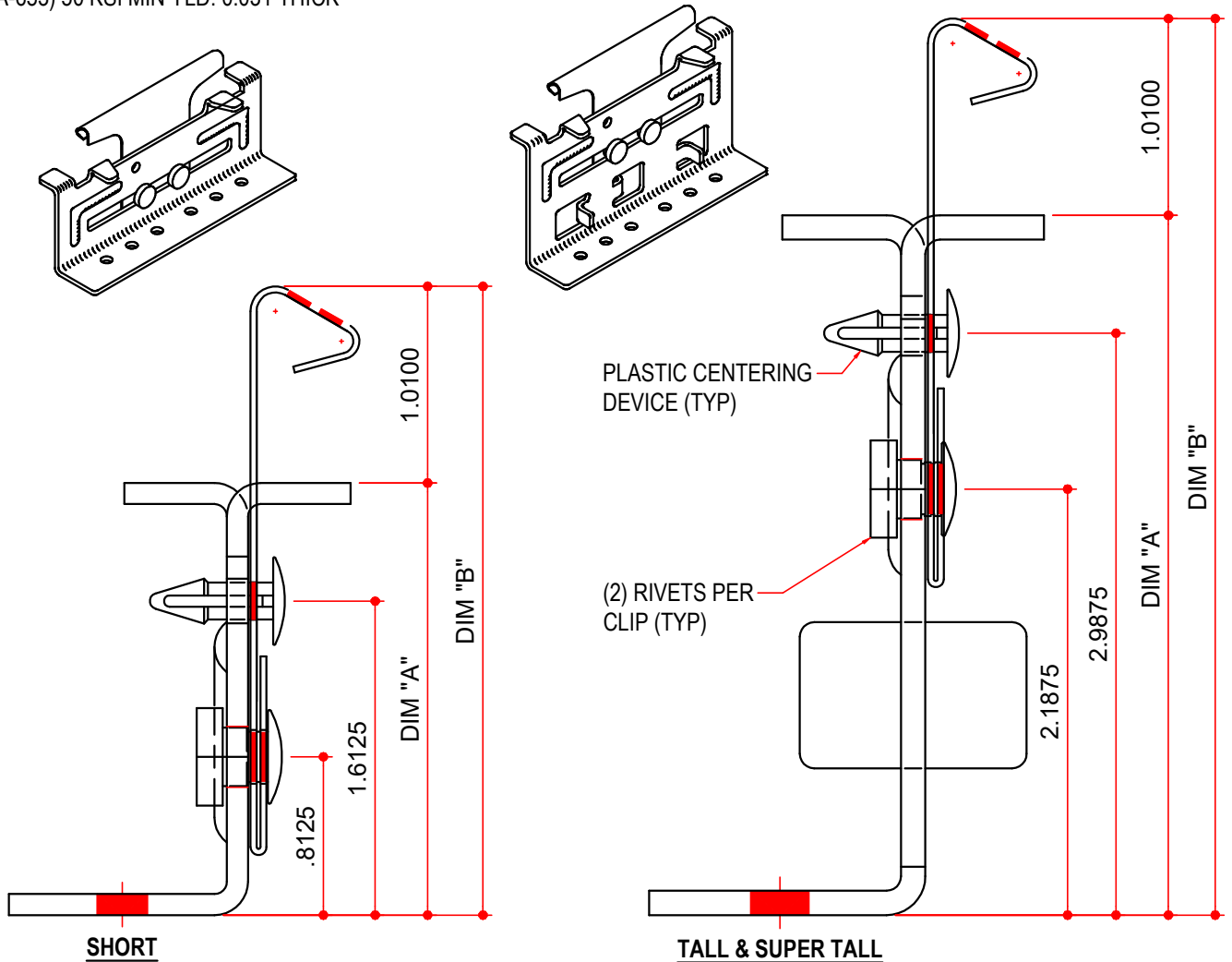
MASTER PART MARK	VIN	AVAILABLE THICKNESS	YIELD MIN.	BLANK LENGTH	BLANK WIDTH	WEIGHT (LBS)
S3PC-1	B	N/A	50 KSI	N/A	N/A	0.61
S3PC-2T	B	N/A	50 KSI	N/A	N/A	0.83
S3PC-5T	B	N/A	50 KSI	N/A	N/A	1.03

MATERIAL:

CLIP BASE: 12 GA (0.104 ± 0.005) GALVANIZED STEEL
ASTM A446 GRADE D 50 KSI MIN

CLIP TAB: G-90 GALVANIZED STEEL (PER ASTM A-653) 50 KSI MIN YLD. 0.031 THICK

MK #	CLIP TYPE	STAND OFF	BASE	TAB	DIM "A"	DIM "B"
S3PC-1	SHORT	1/2"	SHORT	S3PC- <u> </u> - TAB	2.1875	3.2285
S3PC-2T	TALL	1 1/2"	TALL	S3PC- <u> </u> - TAB	3.5625	4.6035
S3PC-5T	SUPER TALL	2 1/2"	SUPER TALL	S3PC- <u> </u> - TAB	4.4590	5.5000



NOTES: BUYOUT

- 1) CLIP TAB TO BASE ASSEMBLY IS A SLIDING FIT.
- 2) REFERENCE THE BASE AND TAB DRAWINGS FOR ADDITIONAL INFORMATION.

AVAILABLE COLORS

NP