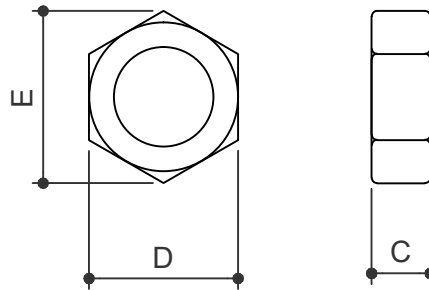


NUTS							NUTS	
MASTER PART NUMBER	VINTAGE	AVAILABLE COLORS	THICKNESS	YIELD	BLANK WIDTH	BLANK LENGTH	TOTAL WEIGHT LBS	LRC
VARIES	A	BK,GZ	N/A	N/A	N/A	N/A	VARIES	



PART NUMBER		VIN.	DESCRIPTION	C	D	E	WGT	USE w/
BLACK	GALV.							
H0300	G0300	A	1/2" A-563 Grade C Nut	.500	.875	1.00	.060	A325 BOLTS
H0310	G0310	A	5/8" A-563 Grade C Nut	.625	1.063	1.250	.116	A325 BOLTS
H0320	G0320	A	3/4" A-563 Grade C Nut	.750	1.250	1.438	.182	A325 BOLTS
H0325	G0325	A	7/8" A-563 Grade C Nut	.875	1.438	1.625	.297	A325 BOLTS
H0330	G0330	A	1" A-563 Grade C Nut	1.000	1.625	1.875	.406	A325 BOLTS
H0340	G0340	A	1 1/4" A-563 Grade C Nut	1.250	2.000	2.313	.740	A325 BOLTS
H0350	G0350	A	1 1/2" A-563 Grade C Nut	1.500	2.375	2.750	1.31	A325 BOLTS
H0400	G0400	A	1/2" A-563 Grade A Nut	.438	.750	.875	.034	SAG RODS & 'G0520'
H0410	G0410	A	5/8" A-563 Grade A Nut	.563	.938	1.06	.108	RODS & CABLES *
H0420	G0420	A	3/4" A-563 Grade A Nut	.625	1.125	1.250	.182	RODS
H0430	G0430	A	7/8" A-563 Grade A Nut	.750	1.313	1.500	.256	RODS & CABLES *
H0440	G0440	A	1" A-563 Grade A Nut	.875	1.500	1.750	.329	RODS
H0450	G0450	A	1 1/8" A-563 Grade A Nut	1.00	1.688	1.938	.403	RODS
H0460	G0460	A	1 1/4" A-563 Grade A Nut	1.06	1.875	2.063	.476	RODS
H0470	G0470	A	1 3/8" A-563 Grade A Nut	1.19	2.063	2.313	.551	RODS
H0480	G0480	A	1 1/2" A-563 Grade A Nut	1.25	2.250	2.500	.624	RODS

* = USE GALVANIZED FOR CABLES

NOTES: